

## BOARD OF TRUSTEES

Temple University – Of The Commonwealth System of Higher Education

Thursday, June 19, 2008, at 3:30 p.m.

Feinstone Lounge, Sullivan Hall  
Liacouras Walk and Berks Mall

### MINUTES

**Presiding Officer: Daniel H. Polett, Chairman of the Board**

*Note: The Trustees met for an information briefing at 2:30 p.m.*

#### **PARTICIPANTS**

**Trustees:** Joan H. Ballots, Ronald R. Donatucci, Loretta C. Duckworth, Lewis F. Gould, Jr., Lon R. Greenberg, Ann Weaver Hart, Lacy H. Hunt, Ulrick P. Joseph, Lewis Katz, Adrian R. King, Jr., Susanna E. Lachs, Patrick V. Larkin, Solomon C. Luo, Joseph W. Marshall, III, J. Christopher W. McNichol, Mitchell L. Morgan, Harry J. Mullany, III, Daniel H. Polett, Robert A. Rovner, James S. White, Michael P. Williams

**University Counsel:** George E. Moore

**Non-Voting Participant:** Nadine Mompremier

**Administration and Staff:** Frank Annunziato, James C. Bausman, Jr., William T. Bergman, Carl Bittenbender, William D. Bradshaw, Theresa Burt, Frank Campbell, Janet Carruth, Melissa Coopersmith, John Daly, Richard M. Englert, Adelaide Ferguson, Gloria Frager, Stephanie Gillin, Thomas Kupp, Larry Lemanski, Robert H. Lux, Linda Mauro, Sandra McDade, Anne Nadol, Timothy C. O'Rourke, Theresa Powell, Robert J. Reinstein, Richard Rumer, Vaughn Shinkus, Andrea Snow, Stuart P. Sullivan, Martin Tansy, Anthony E. Wagner, William Wilkinson, Harry Young, Gregory Zimmaro

Chairman Polett called the meeting to order.

**INVOCATION:** The invocation was given by Trustee Loretta C. Duckworth.

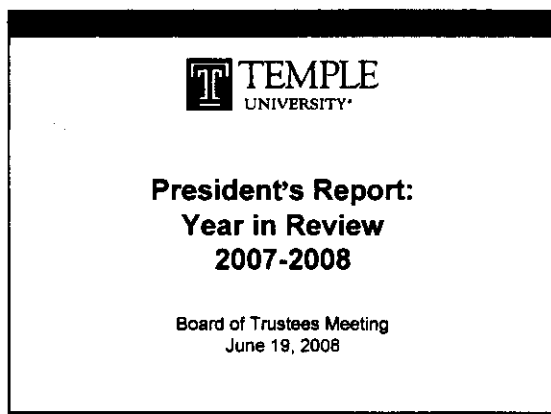
#### **Introduction of Guests**

**Faculty:** Dr. Roberta Sloan

**Students:** Nexus S. Cook, Jeffrey A. Dempsey, Farzad Firoz

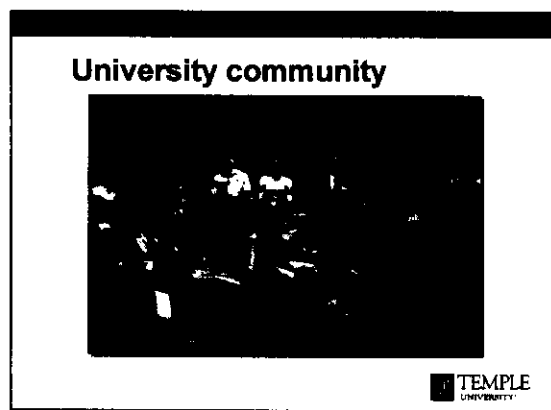
**Approval of Minutes:** The minutes of the meeting of May 13, 2008, were approved.

\* \* \* \* \*



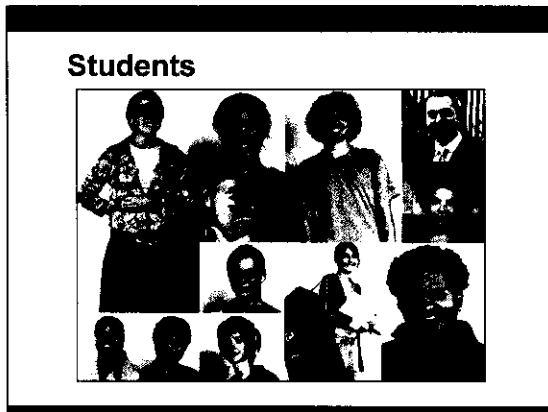
### **Introduction**

- As I did last year, will take this opportunity to provide an update on priorities and accomplishments over the past year.
- It has been a remarkable year, marked by successes in so many areas of the university.
- I am more convinced than ever that Temple will become a major force in our region and nation and a model for great urban research universities.



### **Faculty, Employee and Student Relations**

- Trust and collaboration among faculty, staff and the administration is critical to Temple's success.
- Through informal discussions, engagement with the Faculty Senate, and involvement in student and faculty activities, I have worked earnestly to build good will and generating positive energy in the university community.
- In particular, we have made tremendous strides in building confidence among faculty in the administration.
- These efforts are critical to the work ahead.
- TAUP negotiations; contract expires in October.



### **Student Recruiting and Access**

- Temple's commitment to academic excellence, urban location and growing reputation continue to make it an attractive choice for students at all levels.
- Enrollment has reached its highest level in more than three decades
  - more than 36,000 students enrolled in all programs here and abroad.
- Temple students are exceptionally qualified:
  - average **SAT score** for students who will enter this fall is projected to be **1106**, a 19-point increase over last year's entering class.
  - **average high school GPA** for students who will enter this fall is projected to be **3.4**, up from 3.35 last fall.
  - Incoming students' **average class rank** is projected to increase to the **74<sup>th</sup> percentile**, from 72nd percentile last year.
- continue our commitment to access to excellence for high achieving students from all stations of life.
  - 45 percent of new students last year transferred to Temple from other institutions
  - Many of these students came to Temple through articulation agreements that guarantee admission to students who succeed academically in 12 of the region's community colleges.
- Temple University Philadelphia Scholars initiative, announced in March in partnership with Mayor Nutter and the Philadelphia School District, will provide full tuition scholarships to four talented and motivated Philadelphia high school students, renewable each year.
  - Program begins in fall 2009 and continue for 10 years.

## Community



TEMPLE  
UNIVERSITY

### Community Relations and Service

- The president of a major urban university can be a real force in a city; should be a visible, engaged civic leader.
- We have undertaken a conscious and deliberate strategy to establish relationships that position Temple as a driving force in Philadelphia and the region.
- Our work begins with the communities immediately adjacent to campus and extends to the entire Greater Philadelphia community
  - Opened a magnificent new home for the Charles L. Blockson Afro-American Collection
  - Established home ownership program to help employees who wish to live close to work
  - Transitioning the Pan-African Studies Community Education Program (PASCEP) to a new location at the Community Education Center
  - Continuing to work with Avenue of the Arts, Inc. and economic development groups to establish Temple and North Broad Street as a major Philadelphia destination
- Will continue to create opportunities for partnerships, joint research and employment initiatives and ultimately will help us achieve Temple's potential.

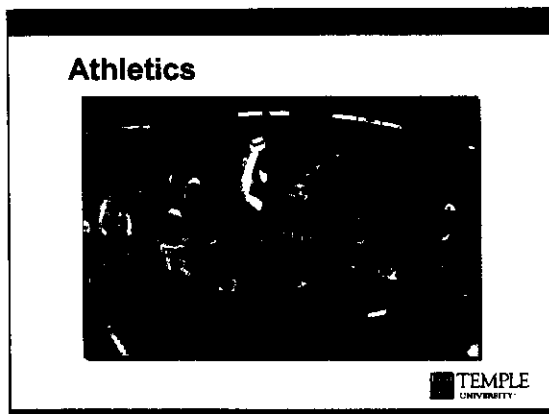
## Global Presence



TEMPLE  
UNIVERSITY

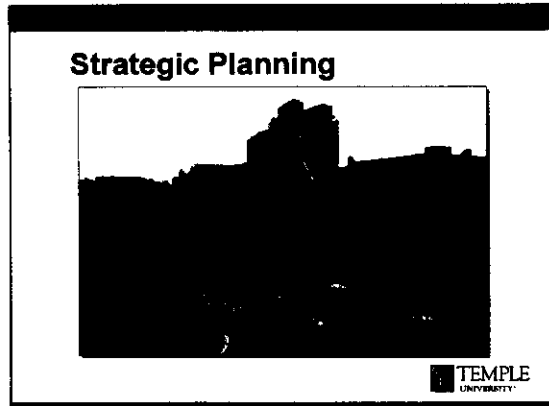
### Expanding Our Global Presence

- Continue to build Temple's historic strength in international education
- Journey to Asia created and affirmed many important international relationships
  - Celebrated 25<sup>th</sup> anniversary of TUJ
  - renewed and energized the visibility and vibrancy of support for the groundbreaking Temple Rule of Law program in Beijing.
  - created new and promising partnerships with leading universities in Taiwan, South Korea and other parts of Asia. (Under the leadership of College of Science and Technology Dean Hai Lung Dai).
- through refocused Office of International Affairs, will continue to strengthen international programs and integrate study abroad more fully into the curriculum.



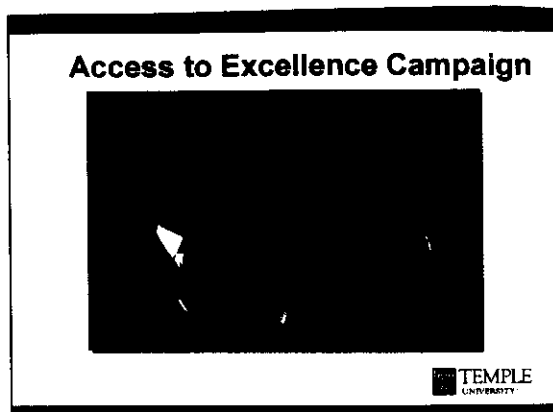
### **Success of University Athletics**

- Temple's athletic programs are continuing on a path for future success.
- New coaches Golden and Dunphy have both made their mark on their programs
  - Football ended with a .500 league record in its first season in the Mid-American Conference
  - Men's basketball advanced to the first round of the NCAA tournament.
- The women's basketball team also made it to the NCAA tournament.
  - Will soon have a new coach.
- Looking forward to further building our fundraising program among our alumni and supporters of athletics.



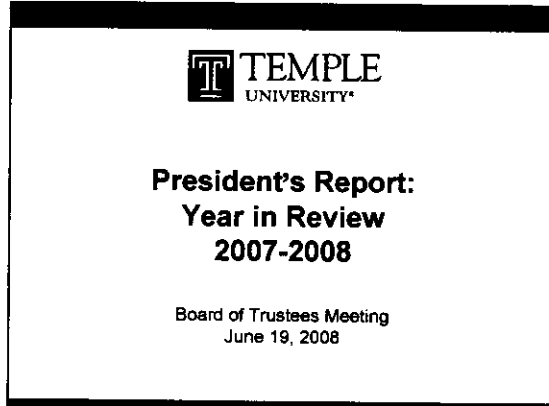
### **Academic, Campus and Financial Planning**

- Academic planning process underway
  - Excited about continuing discussion with key board committees and individuals.
- Completed early work on a comprehensive campus and community development plan.
  - preliminary assessments complete
  - secured the services of a multi-faceted architectural and planning consortium
  - will work with Andrew Altman, the City's new Deputy Mayor for Planning and Commerce (1985 graduate of the College of Liberal Arts), to fully integrate our efforts in a neighborhood approach.
- Establishing framework for financial plan that will support Academic and Campus plans.
  - basis for the next capital campaign
  - identify opportunities for public investments from Philadelphia, the Commonwealth and Federal sources.



### **Access to Excellence Comprehensive Campaign**

- October gala was a magnificent launch to the Access to Excellence campaign
  - more than 1,000 guests joined us at the National Constitution Center
- The splendor of that event has been matched only by the tremendous success we have had in attracting leadership gifts.
- In the past two years we have received a record number of gifts of one million dollars or more
  - 15 last year
  - 14 this year
- We have surpassed **\$296 million** (\$296,592,984) and are on track to reach our \$350 million goal in 2009, our 125th anniversary year.
- Building a culture of philanthropy is essential advancing all areas of Temple's mission and securing the University's future for generations.



### **Conclusion**

- As we enter our 125<sup>th</sup> anniversary year, Temple is at a tipping point in our drive to become one of America's great urban research universities
- Our future priorities will include
  - Continuing to build private fundraising support
  - Stabilizing government support for critical programs, including healthcare
  - improving recruiting programs with community college transfer students, while raising first-time, first-year student admission requirements
  - focusing on student outcomes
  - building stronger neighbor and community relations
  - setting the path for a strong financial future.
- I have so very much enjoyed my first two years at Temple
  - look forward to the opportunity to our continuing work together.

\*\*\*\*\*

**REPORTS AND RECOMMENDATIONS FOR ACTION  
STANDING COMMITTEES**

Committee on Trustee Affairs – Daniel H. Polett, Chairman of the Board

**RECOMMENDATION FOR ACTION**

**1. Election of University Trustee — Ulrick P. Joseph**

Upon motion duly made and seconded, the Board of Trustees approved the recommendation of the Committee on Trustee Affairs (5/7/08) and elected Ulrick P. Joseph, the incoming President of Temple University Alumni Association, to serve as a voting Trustee *ex officio*, for a term effective immediately and expiring June 30, 2010, to the Board of Trustees of Temple University – Of The Commonwealth System of Higher Education.

Executive Committee and Budget & Finance Committee –  
Christopher W. McNichol, Vice Chair of Budget & Finance Committee

**RECOMMENDATIONS FOR ACTION**

**2. University Operating Budget for 2008-2009**

Upon motion duly made and seconded, the Board of Trustees adopted the University Operating Budget and the Operating Budget Policies and Procedures for 2008-2009, as set forth in Agenda Reference 2, 2a, 2c, and 2d.

**3. Provisional Temple University Clinical Enterprise Budget for 2008-2009**

Upon motion duly made and seconded, the Board of Trustees adopted the Provisional Temple University Clinical Enterprise Budget for 2008-2009, with the understanding that a revised final budget will be submitted as soon as practicable and no later than September 30, 2008, as set forth in Agenda Reference 3.

**4. Tuition Schedule for 2008-2009**

Upon motion duly made and seconded, the Board of Trustees approved the Proposed Tuition Rates for 2008-2009, as set forth in Agenda Reference 2b.

**5. General Activities, Computer and Technology, Student Health Services, Student Recreation and Student Facilities Fees, 2008-2009**

Upon motion duly made and seconded, the Board of Trustees approved the General Activities, Computer and Technology, Student Health Services, Student Recreation and Student Facilities Fees for 2008-2009, as set forth on page 7 of Agenda Reference 2b.

**6. Spending Rule for Endowment Assets**

Upon motion duly made and seconded, the Board of Trustees approved the Resolution to Select a Spending Rule for Endowment Assets, as set forth in Agenda Reference 2e.

Board of Directors, Temple University Health System, Inc. –  
Joseph W. Marshall, III, President and Chief Executive Officer

**RECOMMENDATION FOR ACTION**

**7. Provisional Temple University Health System, Inc., Budget 2008-2009**

Upon motion duly made and seconded, the Board of Trustees approved the recommendation of the Board of Directors of Temple University Health System, Inc. (5/30/08), and adopted the Provisional Temple University Health System, Inc., Operating Budget for 2008-2009, with the understanding that a revised final budget will be submitted as soon as practicable and no later than September 30, 2008, as set forth in Agenda Reference 7.

Academic Affairs Committee – Ronald R. Donatucci

**RECOMMENDATIONS FOR ACTION**

**8. Consideration of Tenure**

Upon motion duly made and seconded, the Board of Trustees approved the recommendation of the Academic Affairs Committee (6/17/08) and the President regarding the granting of faculty tenure.

**9. Establishing, Restructuring, Renaming, and Terminating Curricula and Programs in Various Schools and Colleges and the Transferring of Faculty Tenure**

Upon motion duly made and seconded, the Board of Trustees approved the recommendation of the Academic Affairs Committee (6/17/08) that the officers be authorized to establish, restructure, rename and terminate curricula and programs in the various schools and colleges as listed and set forth in Agenda Reference 9:

- A) Establish Curricula in Various Schools and Colleges
- Doctor of Philosophy Degree in Urban Studies in the College of Liberal Arts
  - Master of Science Degree in Health Informatics in the College of Health Professions
  - Master of Healthcare Management in the Fox School of Business and Management
  - Concentration in Pharmaceutical Management in the Master of Business Administration in the Fox School of Business and Management
  - Concentration in Healthcare and Life Sciences Innovations in the Master of Business Administration in the Fox School of Business and Management
- B) Restructure Curricula in Various Schools and Colleges
- Bachelor of Science in Education in Elementary Education in the College of Education
    - Concentration in Special Education
    - Concentration in Early Childhood Education



- Bachelor of Science in Education in Secondary Education in the College of Education
    - Concentration in English Education
    - Concentration in Foreign Language Education
    - Concentration in Mathematics Education
    - Concentration in Science Education
    - Concentration in Social Studies Education
  - Bachelor of Science in Education in Career and Technical Education in the College of Education
    - Concentration in Business Education
    - Concentration in Industrial Education
    - Concentration in Marketing Education
  - Bachelor of Fine Arts Degrees in the Tyler School of Art
    - Ceramics/Glass
    - Fibers and Fabric Design
    - Graphic and Interactive Design
    - Metals/Jewelry/Computer-aided Manufacturing
    - Painting
    - Photography
    - Printmaking
    - Sculpture
- C) Rename Curricula in Various Schools and Colleges
- Terminate the Bachelor of Science in Environmental Studies and Establish a Bachelor of Science in Environmental Science in the College of Science and Technology
  - Terminate the Bachelor of Science in Engineering Technology in Civil and Construction Engineering Technology and Establish a Bachelor of Science in Engineering Technology in Construction Management Technology in the College of Engineering
  - Terminate the Master of Arts in Geography and Master of Arts in Urban Studies and establish a Master of Arts in Geography and Urban Studies in the College of Liberal Arts
- D) Terminate Curricula in Various Schools and Colleges
- Bachelor of Arts in Environmental Studies in the College of Science and Technology
  - Bachelor of Science in Environmental Studies in the College of Liberal Arts
  - Concentration in Healthcare Management in the Master of Business Administration in the Fox School of Business and Management

Facilities Committee – Mitchell L. Morgan, Chair

### **RECOMMENDATIONS FOR ACTION**

#### **10. North Wing, Fourth Floor, Bio-Life Building**

Upon motion duly made and seconded, the Board of Trustees approved the recommendation of the Facilities Committee (6/12/08) that the officers be authorized to proceed with the renovation of the shelled space in the North Wing of the Biology Life Sciences Building at a cost not-to-exceed \$2,250,000 with the funding and financing sources being CST Renovation Fund (#80-1311-002, \$750,000) and the Sbarro Health Research Organization Redevelopment Assistance Capital Program (#1,500,000).

**11. Chemistry Research Laboratory Renovations – 219 and 221 Beury Hall**

Upon motion duly made and seconded, the Board of Trustees approved the recommendation of the Facilities Committee (6/12/08) that the officers be authorized to proceed with the renovation of rooms 219 and 221 in Beury Hall at a cost not-to-exceed \$306,565 with the funding and financing source being College of Science & Technology Renovation Projects (#80-1311-002).

**12. Replace Deteriorated Piping Systems - Klein Hall**

Upon motion duly made and seconded, the Board of Trustees approved the recommendation of the Facilities Committee (6/12/08) that the officers be authorized to proceed with the replacement of all chilled and heating distribution lines in Klein Hall at a cost not-to-exceed \$2,000,000 with the funding and financing source being the Plant Development Fund.

**13. Relocation of the Office of the Dean, College of Science & Technology**

Upon motion duly made and seconded, the Board of Trustees approved the recommendation of the Facilities Committee (6/12/08) that the officers be authorized to proceed with the relocation and renovation of space for the Office of the Dean in the College of Science & Technology at a cost not-to-exceed \$350,973 with the funding and financing source being the College of Science & Technology Renovation Fund (#80-1311-002).

Development Committee – Loretta C. Duckworth

**14. Report**

The quarterly report of the Development Committee was accepted as presented in Agenda Reference 14.

**OFFICERS' REPORTS**

**15. Secretary's Report – George E. Moore**

Upon motion duly made and seconded, the Board of Trustees approved the presentation of degrees-in-course dated November 1, 2008, to candidates approved by the appropriate academic committees of the faculty in the Tsinghua LLM Program in Beijing, China.

**16. Treasurer's Report – Anthony E. Wagner**

Upon motion duly made and seconded, the Board of Trustees approved and accepted the Investment Reports for the Three Months Ended March 31, 2008, and grants and contracts awarded between January 1, 2008, and March 31, 2008, as set forth in Agenda Reference 16.

**OLD BUSINESS**

**NEW BUSINESS**

**ADJOURNMENT**